



ΕΒΡΟΠΕΪΣΚΙ ΠΑΡΛΑΜΕΝΤ ΠΑΡΛΑΜΕΝΤΟ ΕΥΡΟΠΕΟ ΕΥΡΟΠΣΚΪ ΠΑΡΛΑΜΕΝΤ ΕΥΡΟΠΑ-ΠΑΡΛΑΜΕΝΤΕΤ
ΕΥΡΟΠΆΙΣΧΕΣ ΠΑΡΛΑΜΕΝΤ ΕΥΡΟΟΡΑ ΠΑΡΛΑΜΕΝΤ ΕΥΡΩΠΑΪΚΟ ΚΟΙΝΟΒΟΥΛΙΟ ΕΥΡΟΠΕΑΝ ΠΑΡΛΑΜΕΝΤ
ΠΑΡΛΕΜΕΝΤ ΕΥΡΟΠΈΕΝ ΠΑΡΛΑΙΜΙΝΤ ΝΑ ΗΕΟΡΡΑ ΠΑΡΛΑΜΕΝΤΟ ΕΥΡΟΠΕΟ ΕΙΡΟΠΑΣ ΠΑΡΛΑΜΕΝΤΣ
ΕΥΡΟΠΟΣ ΠΑΡΛΑΜΕΝΤΑΣ ΕΥΡÓΡΑΙ ΠΑΡΛΑΜΕΝΤ ΙΛ-ΠΑΡΛΑΜΕΝΤ ΕΥΡΟΠΕΥ ΕΥΡΟΠΕΕΣ ΠΑΡΛΕΜΕΝΤ
ΠΑΡΛΑΜΕΝΤ ΕΥΡΟΠΕΪΣΚΙ ΠΑΡΛΑΜΕΝΤΟ ΕΥΡΟΠΕΥ ΠΑΡΛΑΜΕΝΤΥΛ ΕΥΡΟΠΕΑΝ
ΕΥΡÓΠΣΚΥ ΠΑΡΛΑΜΕΝΤ ΕΥΡΟΠΣΚΙ ΠΑΡΛΑΜΕΝΤ ΕΥΡΟΟΡΑΝ ΠΑΡΛΑΜΕΝΤΤΙ ΕΥΡΟΠΑΡΛΑΜΕΝΤΕΤ

European Parliament - DIT IPEX Central Support



XML PROJECT

Document prepared by the DIT of the European Parliament and
modified by the IPEX Central Support

Contents

| | | |
|----------|--|-----------|
| 1 | INTRODUCTION | 3 |
| 1.1 | The scope..... | 4 |
| 1.1.1 | Scrutiny Status..... | 4 |
| 1.1.2 | Related documents..... | 6 |
| 1.1.3 | Contacts..... | 8 |
| 1.1.4 | Useful links | 9 |
| 2 | NATIONAL SCRUTINY PAGES FILLING UP | 10 |
| 2.1 | Data | 10 |
| 2.1.1 | Information for the referent dossier..... | 10 |
| 2.1.2 | Information for the national scrutiny page..... | 10 |
| 2.2 | ZIP format | 11 |
| 2.3 | XML Schema..... | 11 |
| 2.4 | Examples..... | 15 |
| 2.4.1 | Related documents [2 links (PDF)]..... | 15 |
| 2.4.2 | Related documents [1 link] + Subsidiarity | 17 |
| 2.4.3 | Related documents [1 link] + Contacts + Useful link..... | 19 |
| 2.4.4 | Related documents [Description EN/FR]..... | 21 |
| 2.4.5 | Related documents [3 files] | 23 |
| 3 | DIAGRAMS | 25 |
| 3.1 | Addition..... | 25 |
| 3.1.1 | Process diagram..... | 25 |
| 3.1.2 | Activity diagram..... | 26 |
| 3.2 | Update..... | 27 |
| 3.2.1 | Process diagram..... | 27 |
| 3.2.2 | Activity diagram..... | 28 |
| 3.3 | Suppression..... | 29 |
| 4 | MANAGEMENT RULES | 29 |
| 5 | QUESTIONS | 29 |
| 6 | ANNEX..... | 30 |

1 Introduction

IPEX has become an important tool for exchange of EU related information among the parliament in the EU. In order for IPEX to be a useful tool, all relevant EU documents must be uploaded as soon as they are available. This will be even more important when the Reform Treaty is adopted, and the national parliaments are given greater powers to control and scrutinize EU documents.

At present, the IPEX Correspondents from national parliaments manually insert information concerning scrutiny activities carried out by their parliaments/chambers (and upload documents and links) to IPEX dossiers.

The IPEX Board has mandated the Central Support to study an alternative solution for uploading the above information, providing the national parliament with a communication "*channel*" enabling the system to receive an XML file containing the minimum attributes for the update of the IPEX dossier. The idea behind the system is that each parliamentary database should export an XML file and send it to IPEX. The XML file should include information on all relevant EU documents in the system.

The purpose of this document is to introduce this XML project to the experts in national parliaments and prepare the ground for the meeting where the issues will be discussed in detail.

1.1 THE SCOPE

Currently, the procedure to create and fill a national scrutiny page is as follows (IPEX_GuideForCorrespondents_v1.2.en.pdf):

This page displays some information about the IPEX dossier including its number, title...

You can:

- Edit the scrutiny status
- Edit a list of related documents. For each related document the user can add text and a link to an external web page or a local file (stored in the IPEX web site file store)
- Edit a list of related contact points. The chamber's correspondents are already displayed.
- Edit a list of related useful links

IPEX Interparliamentary EU Information Exchange

Home | EU Calendar | Documents | Bulletin Board | Links | Correspondents | About | Search

Recent scrutiny updates | Quick search documents | Quick search dossiers

Home > Documents > Quick search dossiers > Dossier COD/2006/0308 > Riksdagen

Riksdagen

Scrutiny status - §3.2.1 -

Status for Parliamentary Scrutiny

Display status history

Update status

Related documents

- COM/2006/0869

COD/2006/0308

Proposal for a EUROPEAN PARLIAMENT AND COUNCIL REGULATION repealing Council Regulation (EEC) No 954/79 concerning the ratification by Member States of, or their accession to, the United Nations Convention on a Code of Conduct for Liner Conferences

Scrutiny information

Referred to the Committee on Foreign Affairs 30. Jan. 2007.

Add a link or Add a file

New entry

Text for the 1st related document - §3.2.2 -

Link OR File for the 1st related document - §3.2.2 -

Contact points for EU matters

Specific Contacts:

Add a contact

IPEX correspondent: Ms Zetterman

List of contacts - §3.2.3 -

Other links

Add a link

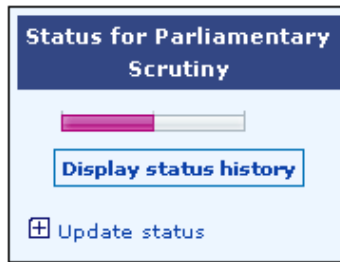
List of useful links - §3.2.4 -

Questions be addressed to the Central Support -

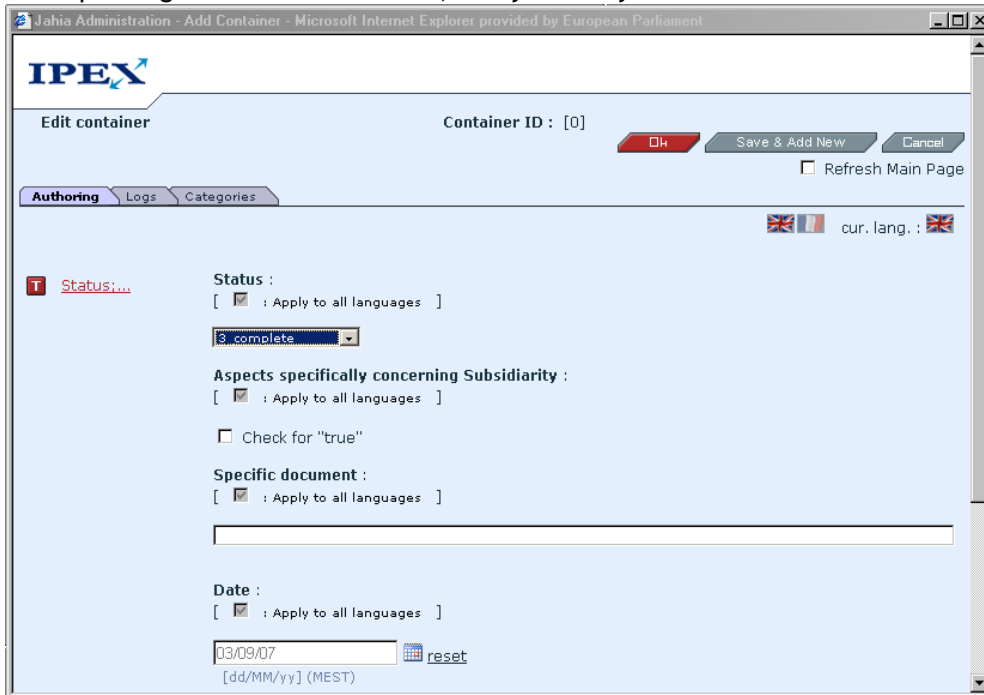
IPEX version 3.1

1.1.1 Scrutiny Status

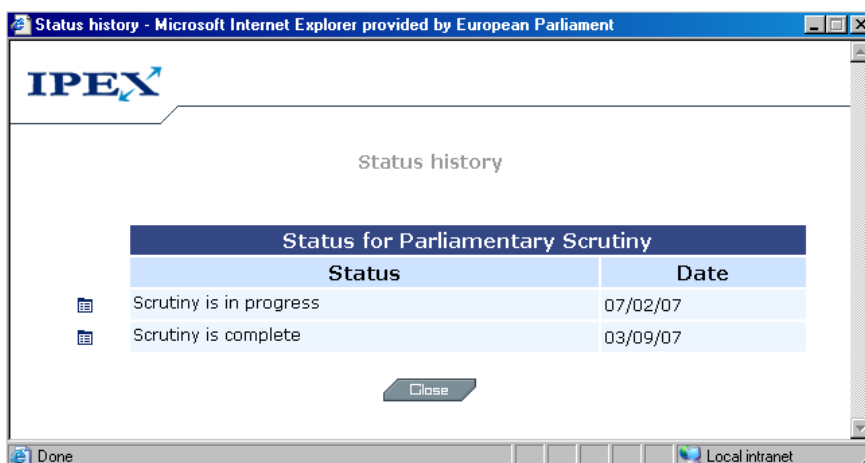
To update the status for Parliamentary Scrutiny click on [Update status](#)



- Then you must select the new status in the list, indicate whether there is subsidiarity issue (by checking the box if "true"), fill in the field for specific document, and select a corresponding date. If no date is set, today is set by default.




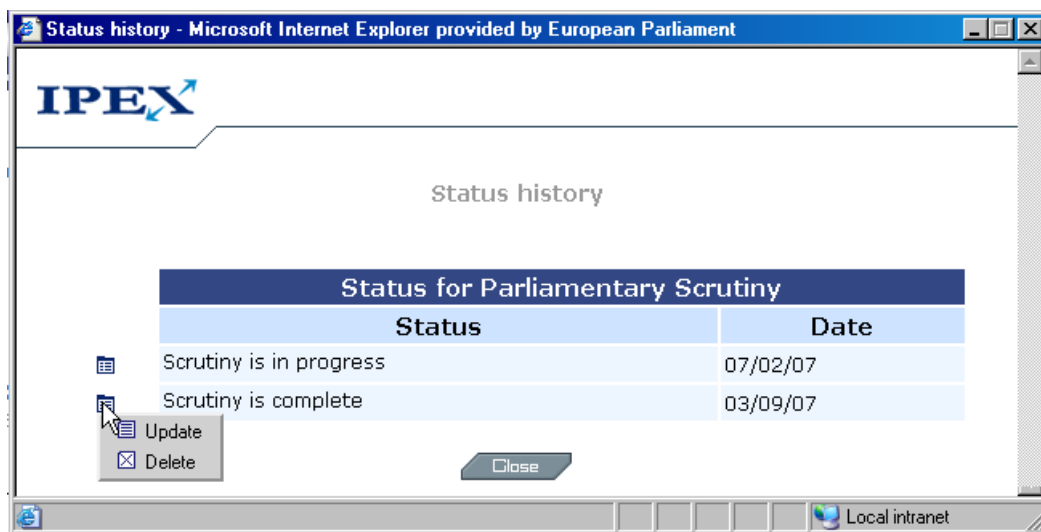
- By clicking on the **Display status history** button you can view the Scrutiny status history in chronological order (in a popup window):



- After having published the Scrutiny page, the parent page (IPEX Dossier details) reflects the updated scrutiny status:



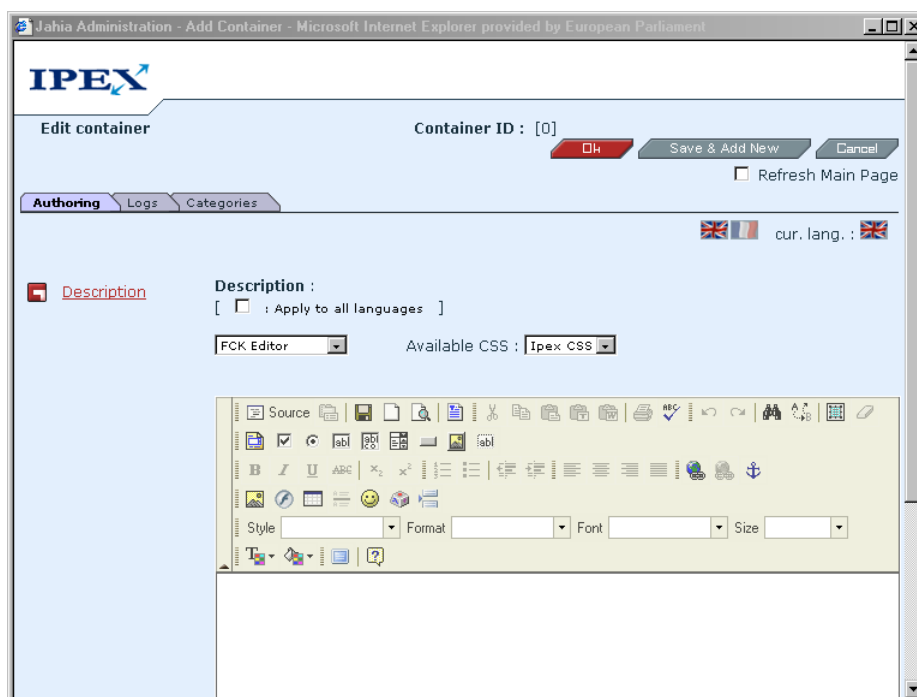
- To update a status afterwards (in case of mistake for instance) you must be in Edit mode and click on the **Display status history** button. In the popup window that opens each status can be updated using the icon 




- Create a scrutiny requires between 5 and 8 clicks.
- However, a scrutiny is generally associated to additional information: documents, links, list of contacts, useful links. The addition of this information involves a more significant number of Jahia actions (following sub-paragraphs).

1.1.2 Related documents

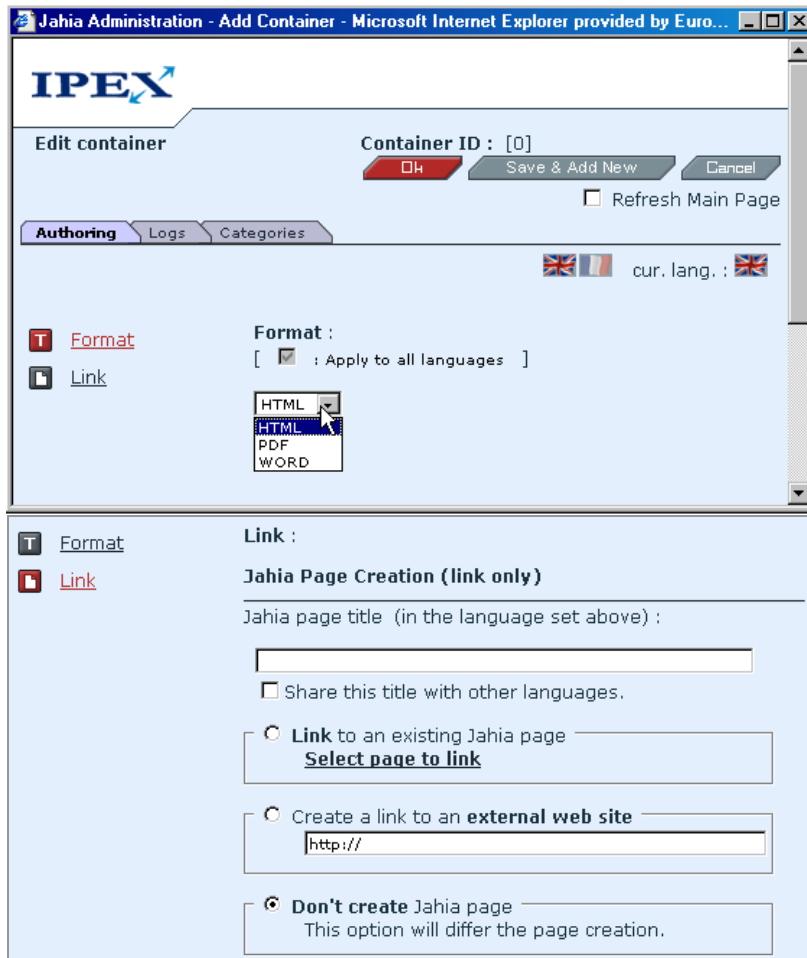
- Add text by clicking on  **New entry** :



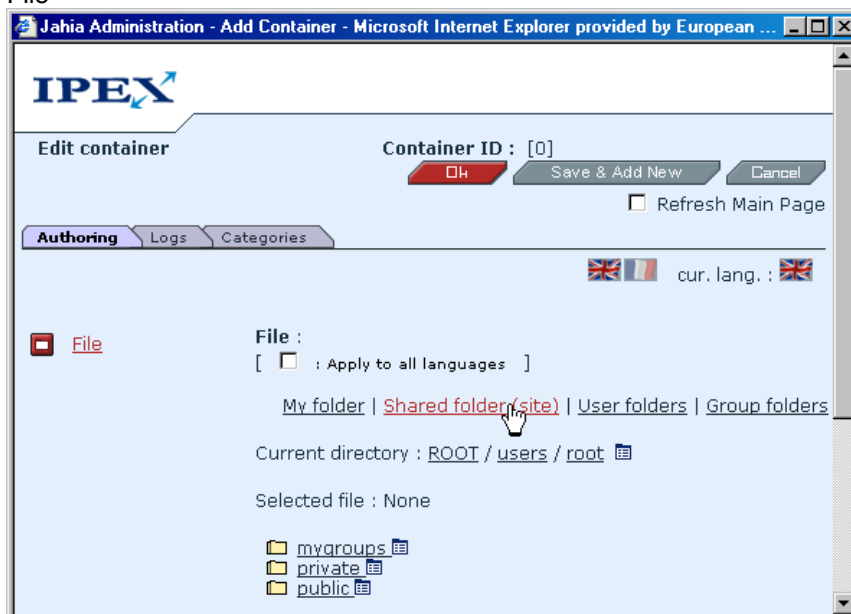
✚ The result is: 
[+ Add a link](#) or [+ Add a file](#)

✚ Then you can click on [+ Add a link](#) OR on [+ Add a file](#)

➤ Link

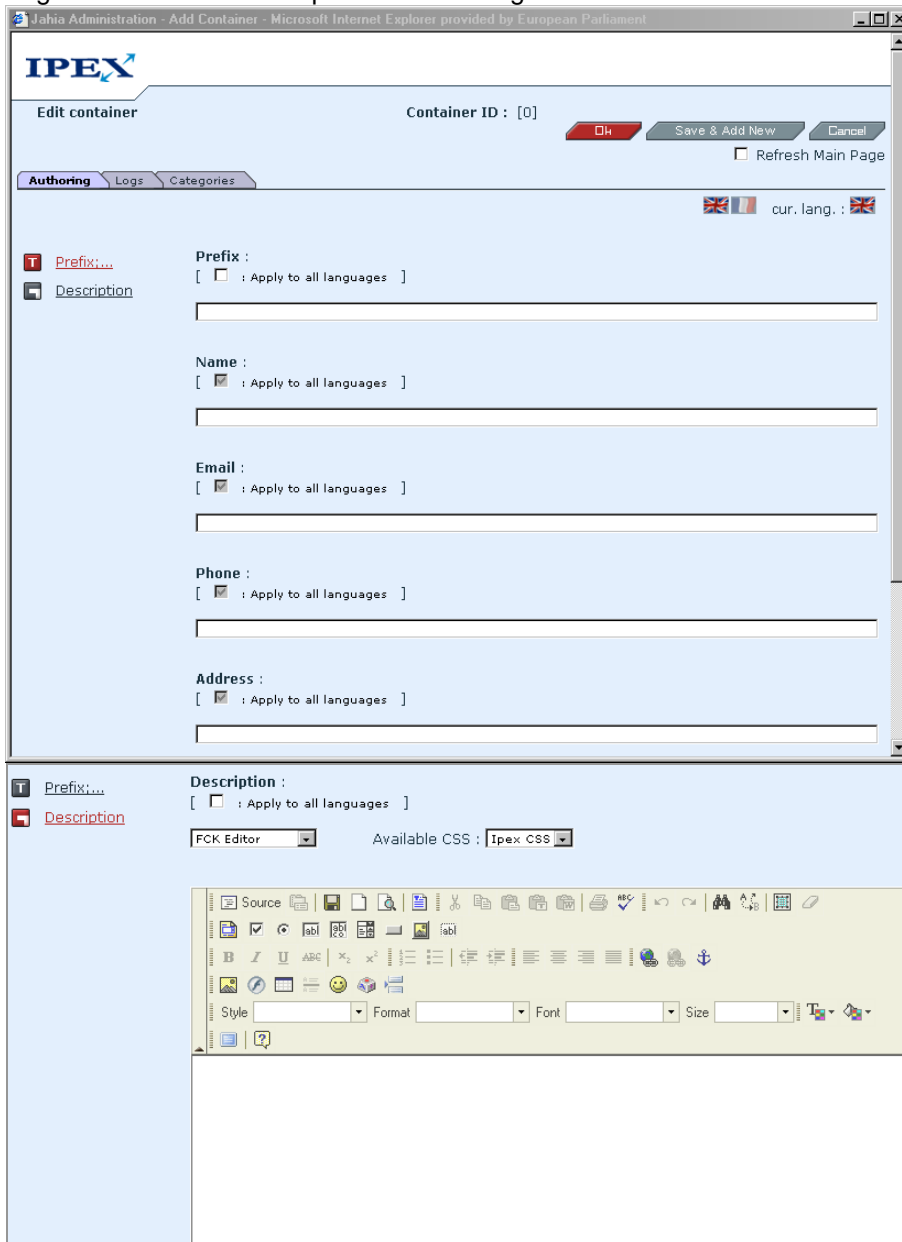


➤ File



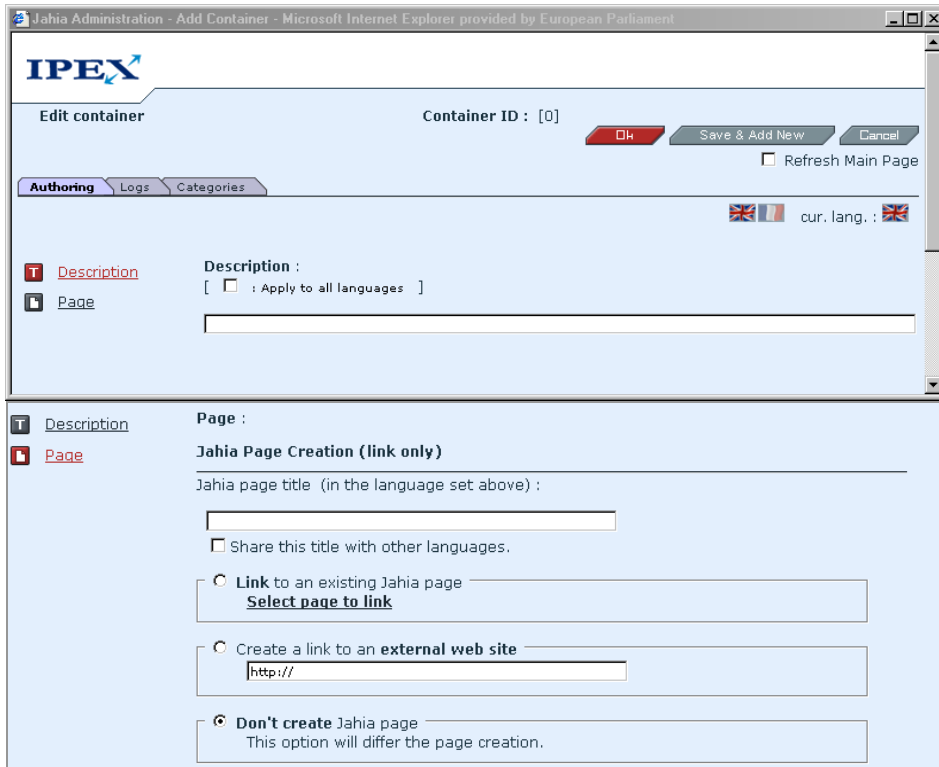
1.1.3 Contacts

Clicking on [Add a contact](#) opens the following window:



1.1.4 Useful links

Clicking on [Add a link](#) opens the following window:



2 National scrutiny pages filling up

The idea of the IPEX Working group is gathering on the same page information to create a national scrutiny page, and a submit button to send these scrutiny information (represented by xml data) and then the national scrutiny page is automatically created with all information in each language (EN and FR).

2.1 DATA

2.1.1 Information for the referent dossier

- ❑ Reference
 - ❖ Code
 - ❖ Year
 - ❖ Number
- ❑ Chamber

2.1.2 Information for the national scrutiny page

- ❑ Scrutiny Status
 - ❖ Scrutiny Status
 - ❖ Aspects specifically concerning Subsidiarity
 - ❖ Specific document
 - ❖ Date
- ❑ Related documents
 - ❖ Description
 - ❖ Link or file to related document

 - ❖ others related documents
- ❑ Contacts points for EU Matters
 - ❖ Prefix
 - ❖ Name
 - ❖ Email
 - ❖ Phone
 - ❖ Address
 - ❖ Description

 - ❖ others contacts
- ❑ Other links
 - ❖ link + description

 - ❖ others links

2.2 ZIP FORMAT

- ❑ The zip file will contain:
 - ❖ the xml file composed by the data above-mentioned
Note that there will be one single xml file which contains data, by block, for each language.
 - ❖ the related documents ([paragraph 4.1.3](#))
- ❑ The pattern of the zip file will be the following:
code_year_number_chamberCode.zip
where:
 - code* = Dossier code (part of its reference)
 - year* = Dossier year (part of its reference)
 - number* = Dossier number (part of its reference)
 - chamberCode* = specific code of the chamber ([Annex - paragraph 8](#))

ATTENTION: The zip files size is arbitrarily limited to 5Mo in order to avoid a server overload.

2.3 XML SCHEMA

- ❑ The pattern of the XML file will be the following:
code_year_number_chamberCode.xml
where:
 - code* = Dossier code (part of its reference)
 - year* = Dossier year (part of its reference)
 - number* = Dossier number (part of its reference)
 - chamberCode* = specific code of the chamber ([Annex - paragraph 8](#))

```

<?xml version="1.0" encoding="UTF-8"?>
<xs:schema xmlns:xs="http://www.w3.org/2001/XMLSchema">
  <!-- dossier -->
  <xs:element name="code">
    <xs:simpleType>
      <xs:restriction base="xs:NMTOKEN">
        <xs:enumeration value="COM"/>
        <xs:enumeration value="SEC"/>
        <xs:enumeration value="IGC"/>
        <xs:enumeration value="ACC"/>
        <xs:enumeration value="AVC"/>
        <xs:enumeration value="CNB"/>
        <xs:enumeration value="CNC"/>
        <xs:enumeration value="CNS"/>
        <xs:enumeration value="COD"/>
        <xs:enumeration value="SYN"/>
      </xs:restriction>
    </xs:simpleType>
  </xs:element>
  <xs:element name="year" type="xs:short"/>
  <xs:element name="number" type="xs:short"/>
  <xs:complexType name="referenceType">
    <xs:sequence>
      <xs:element ref="code"/>
      <xs:element ref="year"/>
      <xs:element ref="number"/>
    </xs:sequence>
  </xs:complexType>
  <xs:element name="chamber" type="xs:string"/>
  <xs:complexType name="dossierType">
    <xs:sequence>
      <xs:element name="reference" type="referenceType"/>
      <xs:element ref="chamber"/>
    </xs:sequence>
  </xs:complexType>
  <!-- scrutiny_status -->
  <xs:element name="subsidiarityAspects" type="xs:string"/>
  <xs:element name="specific_doc" type="xs:string"/>
  <xs:element name="scrutiny_date" type="xs:string"/>
  <xs:complexType name="scrutiny_statusType">
    <xs:sequence>
      <xs:element ref="subsidiarityAspects"/>
      <xs:element ref="specific_doc"/>
      <xs:element ref="scrutiny_date"/>
    </xs:sequence>
    <xs:attribute name="scrutiny_name" type="xs:string" use="required"/>
  </xs:complexType>
  <!-- document_links_sources -->
  <xs:element name="document_links_description" type="xs:string"/>
  <xs:element name="sourceFormat">
    <xs:simpleType>
      <xs:restriction base="xs:string">
        <xs:enumeration value="HTML"/>
        <xs:enumeration value="PDF"/>
        <xs:enumeration value="WORD"/>
      </xs:restriction>
    </xs:simpleType>
  </xs:element>
  <xs:element name="sourceTitle" type="xs:string"/>
  <xs:element name="sourceUrl" type="xs:string"/>
  <xs:complexType name="sourceLinkType">
    <xs:sequence>

```

 Dossier

 Scrutiny status

 Related documents

```

    <xs:element ref="sourceTitle"/>
    <xs:element ref="sourceUrl"/>
  </xs:sequence>
</xs:complexType>

<xs:complexType name="document_links_sourcesType">
  <xs:sequence>
    <xs:element ref="sourceFormat"/>
    <xs:element name="sourceLink" type="sourceLinkType"/>
  </xs:sequence>
</xs:complexType>

<xs:element name="linksFile" type="xs:string"/>
<xs:complexType name="document_links_filesType">
  <xs:sequence>
    <xs:element ref="linksFile"/>
  </xs:sequence>
</xs:complexType>

<xs:complexType name="document_linksType">
  <xs:sequence>
    <xs:element ref="document_links_description"/>
    <xs:element name="document_links_sources" type="document_links_sourcesType" minOccurs="0"/>
    <xs:element name="document_links_files" type="document_links_filesType" minOccurs="0"/>
  </xs:sequence>
</xs:complexType>

<!-- contact -->
<xs:element name="contactPrefix" type="xs:string"/>
<xs:element name="contactName" type="xs:string"/>
<xs:element name="contactEmail" type="xs:string"/>
<xs:element name="contactPhone" type="xs:string"/>
<xs:element name="contactAddress" type="xs:string"/>
<xs:element name="contactDescription" type="xs:string"/>

<xs:complexType name="contactsType">
  <xs:sequence>
    <xs:element ref="contactPrefix"/>
    <xs:element ref="contactName"/>
    <xs:element ref="contactEmail"/>
    <xs:element ref="contactPhone"/>
    <xs:element ref="contactAddress"/>
    <xs:element ref="contactDescription"/>
  </xs:sequence>
</xs:complexType>

<!-- useful_links -->
<xs:element name="useful_description" type="xs:string"/>

<xs:element name="pageTitle" type="xs:string"/>
<xs:element name="pageUrl" type="xs:string"/>

<xs:complexType name="useful_pageType">
  <xs:sequence>
    <xs:element ref="pageTitle"/>
    <xs:element ref="pageUrl"/>
  </xs:sequence>
</xs:complexType>

<xs:complexType name="useful_linksType">
  <xs:sequence>
    <xs:element ref="useful_description"/>
    <xs:element name="useful_page" type="useful_pageType"/>
  </xs:sequence>
</xs:complexType>

<!-- language -->
<xs:element name="langue">
  <xs:simpleType>
    <xs:restriction base="xs:string">
      <xs:enumeration value="EN"/>
      <xs:enumeration value="FR"/>
    </xs:restriction>
  </xs:simpleType>


```


 Contacts


 Useful links


 Language

```
</xs:restriction>
</xs:simpleType>
</xs:element>
<xs:complexType name="languageType">
  <xs:sequence>
    <xs:element ref="langue"/>
    <xs:element name="document_links" type="document_linksType" maxOccurs="unbounded"/>
    <xs:element name="contacts" type="contactsType" maxOccurs="unbounded"/>
    <xs:element name="useful_links" type="useful_linksType" maxOccurs="unbounded"/>
  </xs:sequence>
</xs:complexType>
<!-- scrutiny -->
<xs:element name="scrutiny">
  <xs:complexType>
    <xs:sequence>
      <xs:element name="dossier" type="dossierType"/>
      <xs:element name="scrutiny_status" type="scrutiny_statusType"/>
      <xs:element name="language" type="languageType"/>
    </xs:sequence>
  </xs:complexType>
</xs:element>
</xs:schema>
```



2.4 EXAMPLES

The following examples, showing a few cases of Dossier (functions of their data), display:

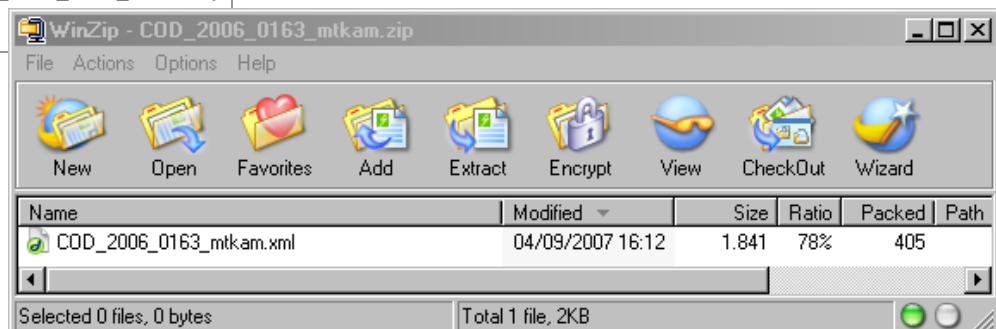
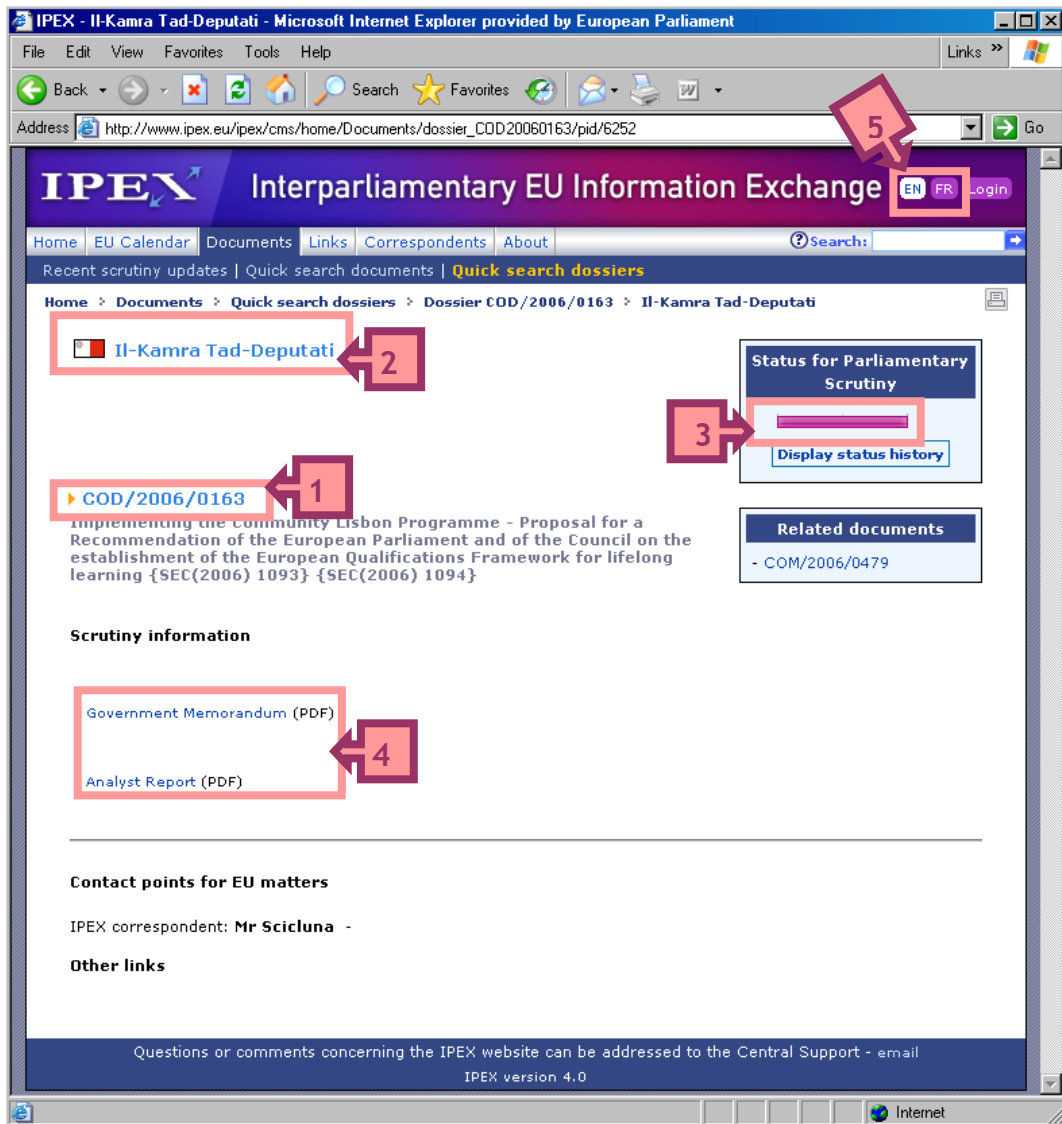
- the Dossier reference, the chamber and the Scrutiny page (URL and screen shot)
- the zip file and the xml file for uploading data in the above-mentioned page

2.4.1 Related documents [2 links (PDF)]

Dossier reference COD/2006/0163

Chamber: Maltese House of Representatives

URL: http://www.ipex.eu/ipex/cms/home/Documents/dossier_COD20060163/pid/6252



```

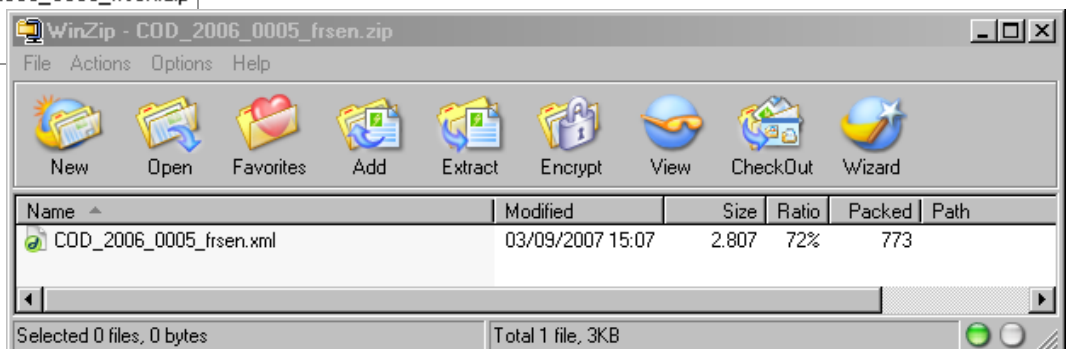
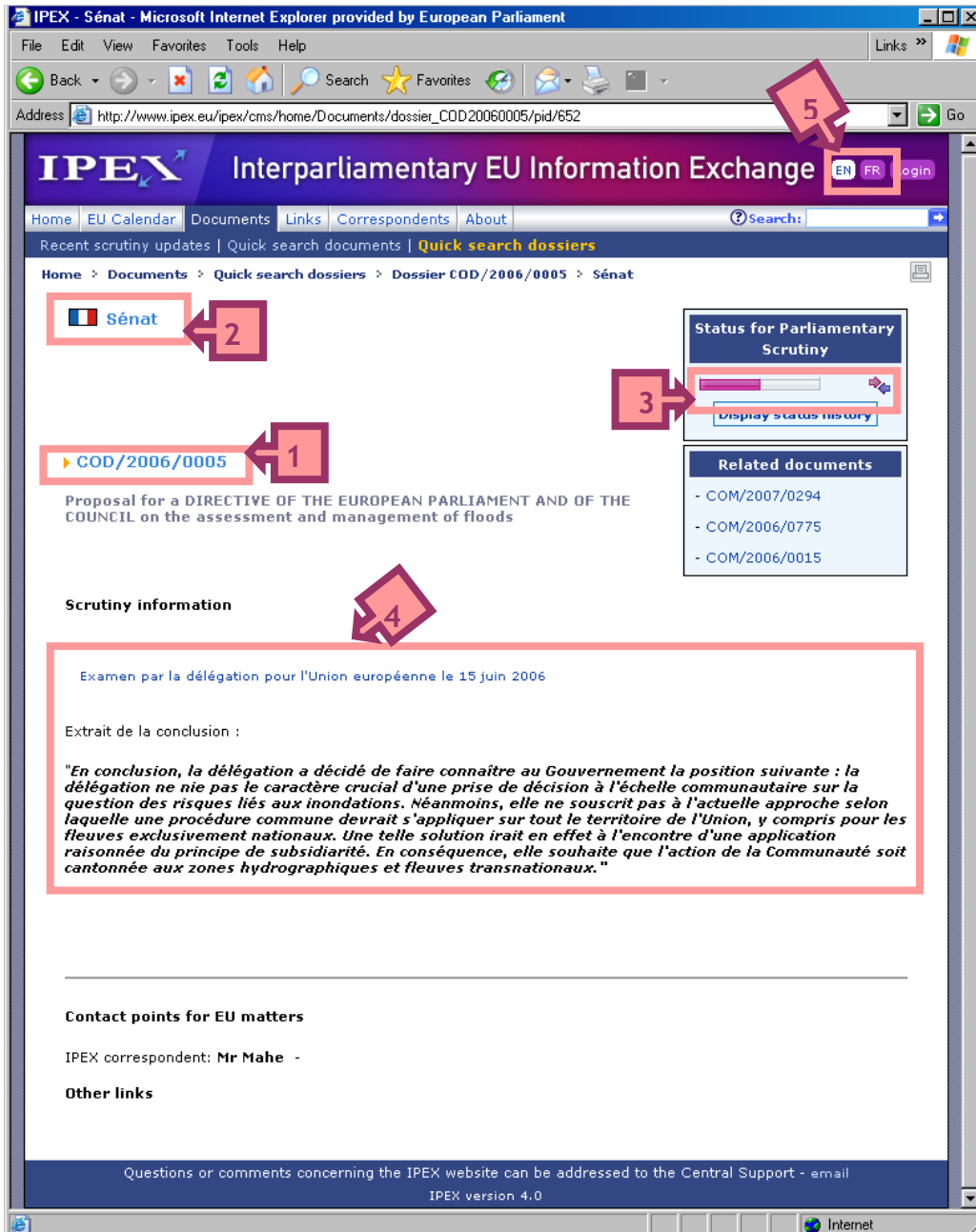
<?xml version="1.0" encoding="UTF-8"?>
<scrutiny>
  <dossier>
    <reference>
      <code>COD</code>
      <year>2006</year>
      <number>0163</number>
    </reference>
    <chamber>mthou</chamber>
  </dossier>
  <scrutiny_status scrutiny_name="3_complete">
    <subsidiarityAspects>>false</subsidiarityAspects>
    <scrutiny_date>04/12/06</scrutiny_date>
  </scrutiny_status>
  <language>
    <langue>EN</langue>
    <document_links>
      <document_links_description></document_links_description>
      <document_links_sources>
        <sourceFormat>PDF</sourceFormat>
        <sourceLink>
          <sourceTitle>Government Memorandum</sourceTitle>
          <sourceUrl>http://www.parliament.gov.mt/information/Papers/5974(A).pdf</sourceUrl>
        </sourceLink>
      </document_links_sources>
    </document_links>
    <document_links>
      <document_links_description></document_links_description>
      <document_links_sources>
        <sourceFormat>PDF</sourceFormat>
        <sourceLink>
          <sourceTitle>Analyst Report</sourceTitle>
          <sourceUrl>http://www.parliament.gov.mt/information/Papers/5974(C).pdf</sourceUrl>
        </sourceLink>
      </document_links_sources>
    </document_links>
  </language>
  <language>
    <langue>FR</langue>
    <document_links>
      <document_links_description></document_links_description>
      <document_links_sources>
        <sourceFormat>PDF</sourceFormat>
        <sourceLink>
          <sourceTitle>Government Memorandum</sourceTitle>
          <sourceUrl>http://www.parliament.gov.mt/information/Papers/5974(A).pdf</sourceUrl>
        </sourceLink>
      </document_links_sources>
    </document_links>
    <document_links>
      <document_links_description></document_links_description>
      <document_links_sources>
        <sourceFormat>PDF</sourceFormat>
        <sourceLink>
          <sourceTitle>Analyst Report</sourceTitle>
          <sourceUrl>http://www.parliament.gov.mt/information/Papers/5974(C).pdf</sourceUrl>
        </sourceLink>
      </document_links_sources>
    </document_links>
  </language>
</scrutiny>
  
```

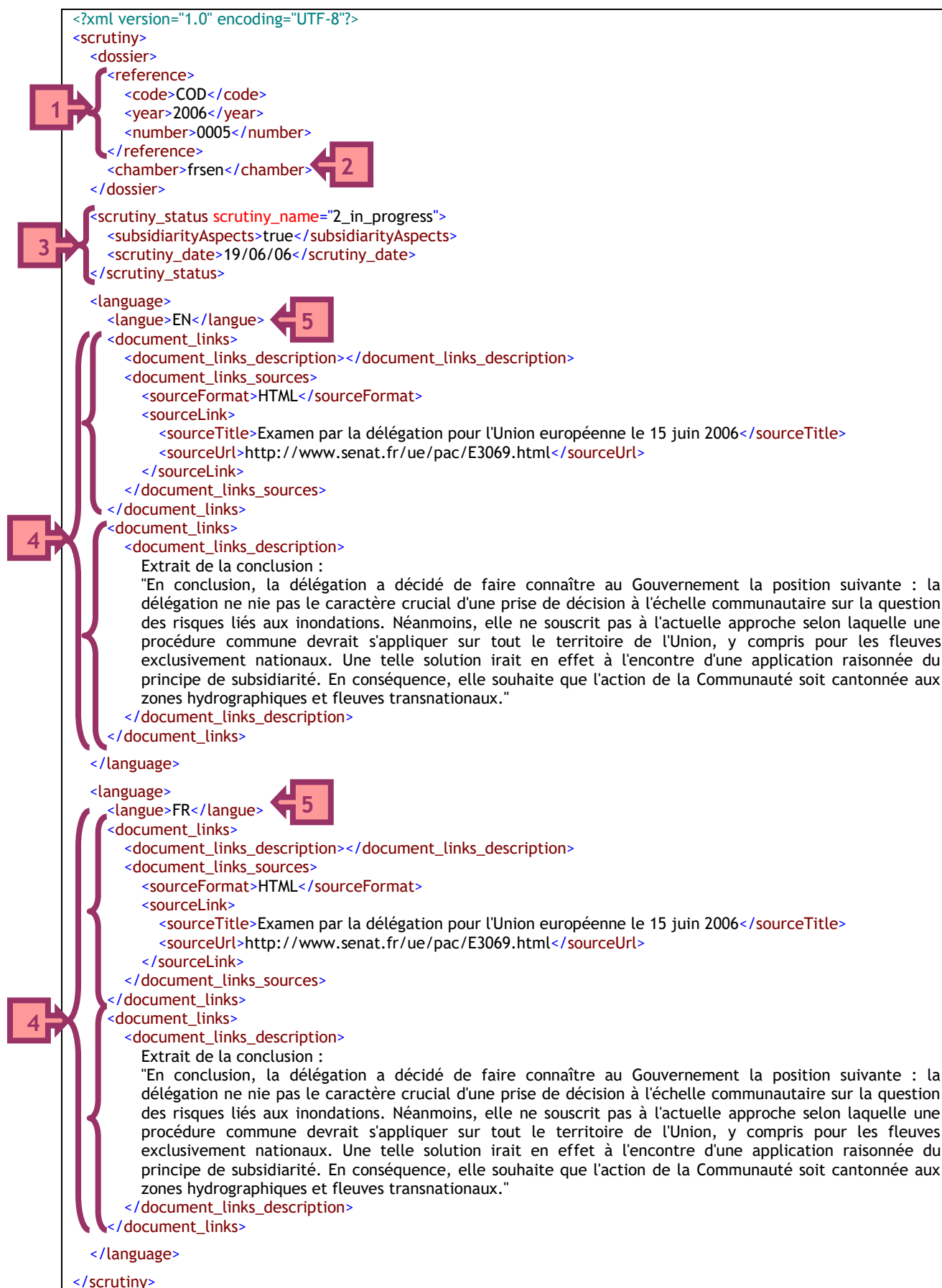

2.4.2 Related documents [1 link] + Subsidiarity

Dossier reference COD/2006/0005

Chamber: French Senate

URL: http://www.ipex.eu/ipex/cms/home/Documents/dossier_COD20060005/pid/652



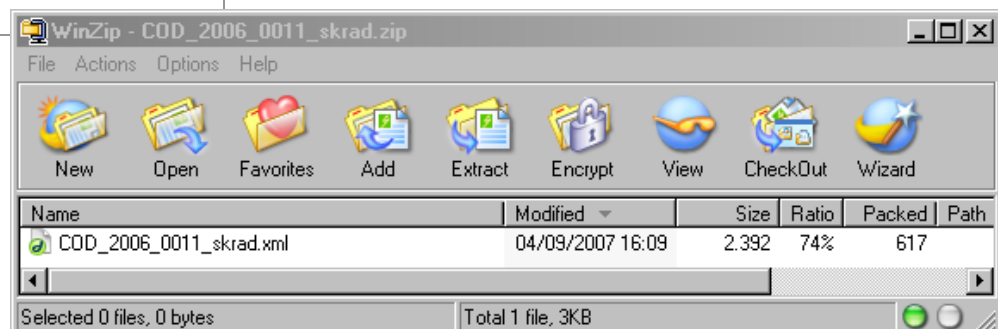
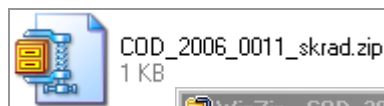
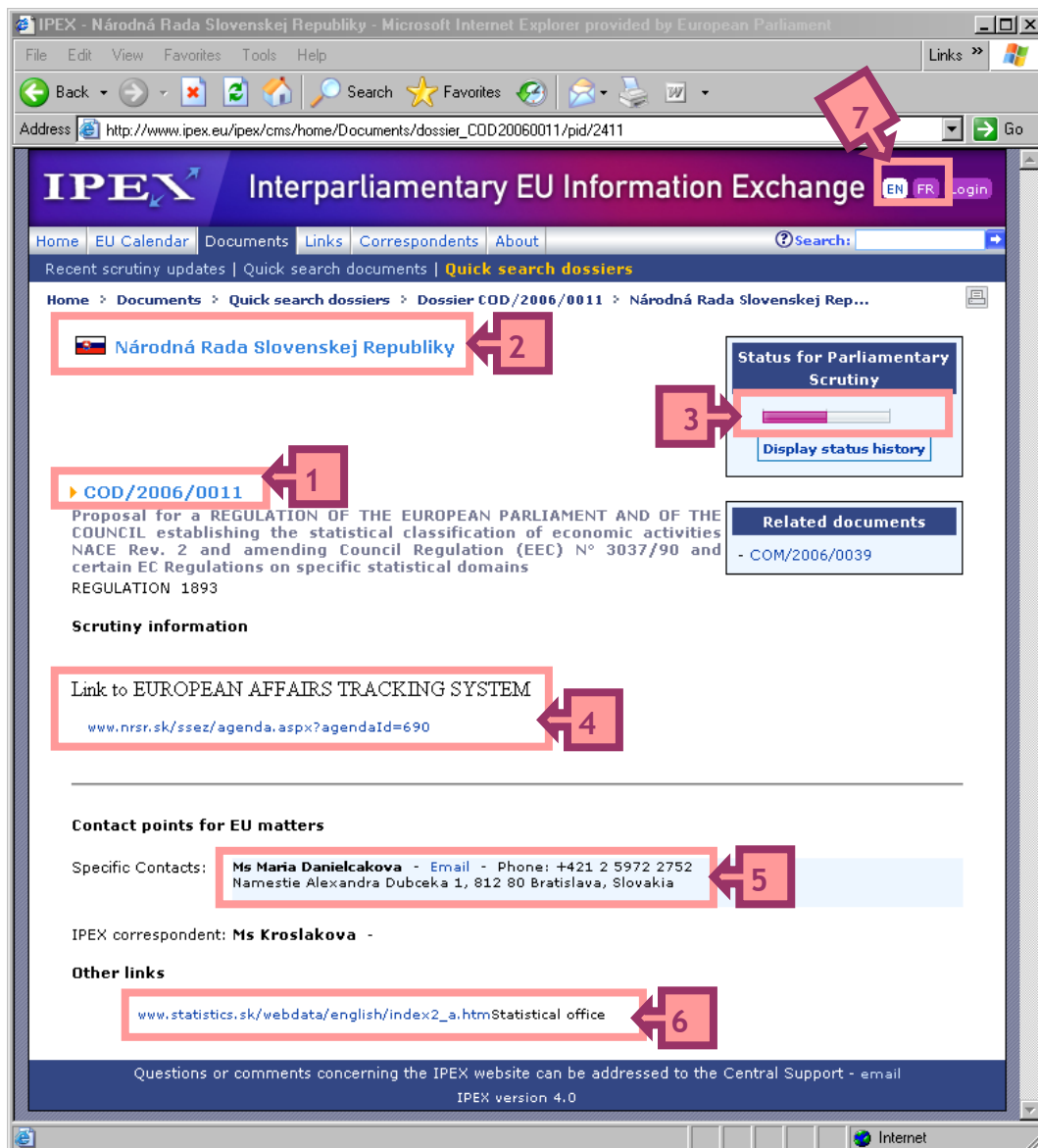


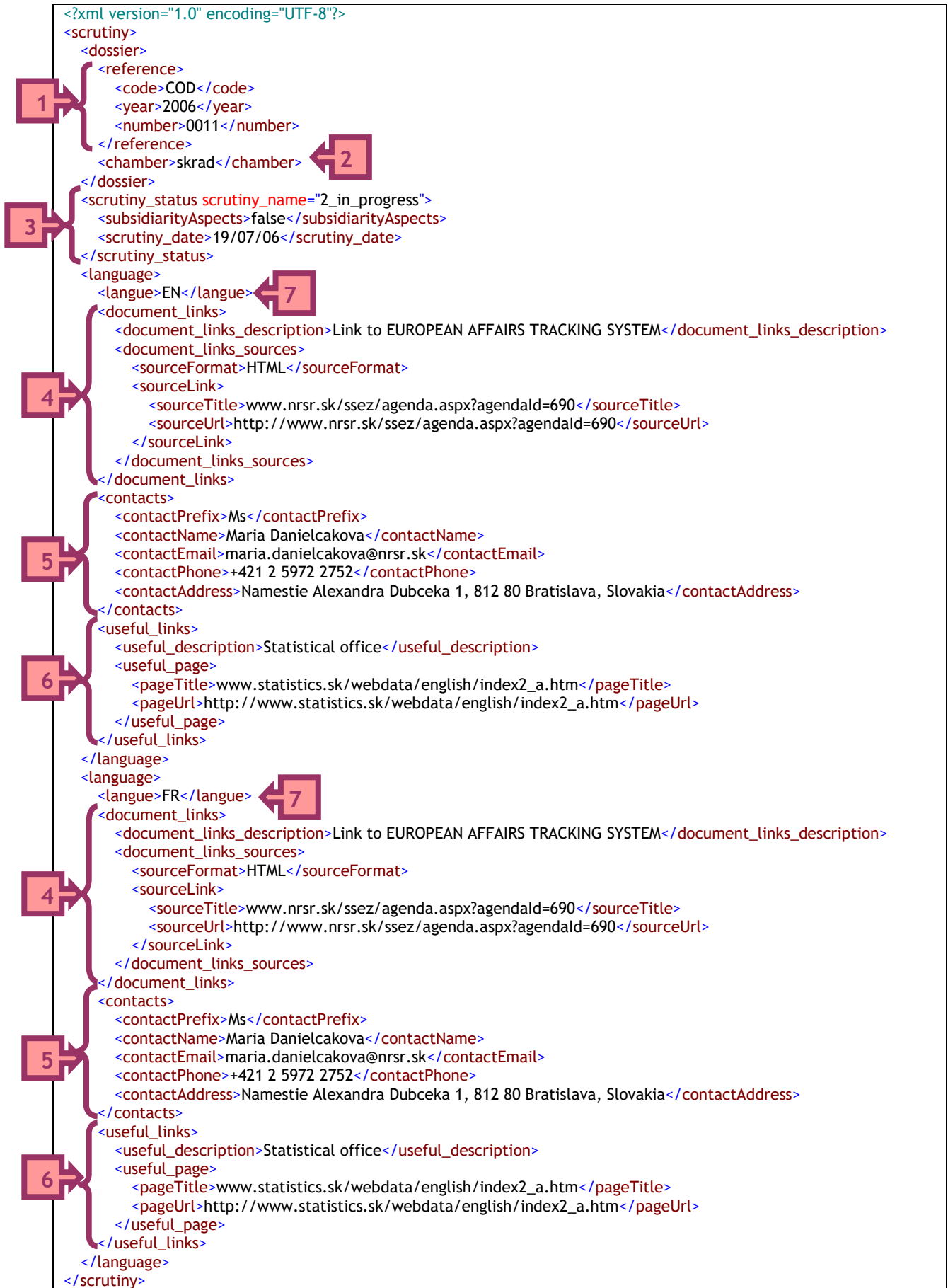
2.4.3 Related documents [1 link] + Contacts + Useful link

Dossier reference COD/2006/0011

Chamber: Slovakian National Council

URL: http://www.ipex.eu/ipex/cms/home/Documents/dossier_COD20060011/pid/2411



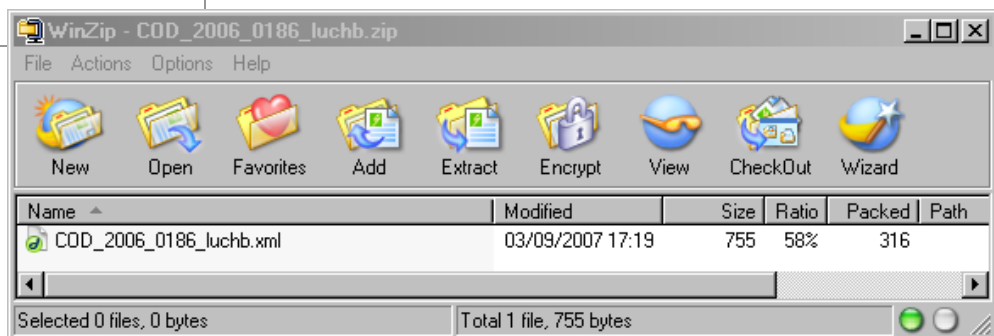
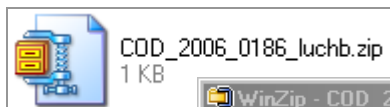
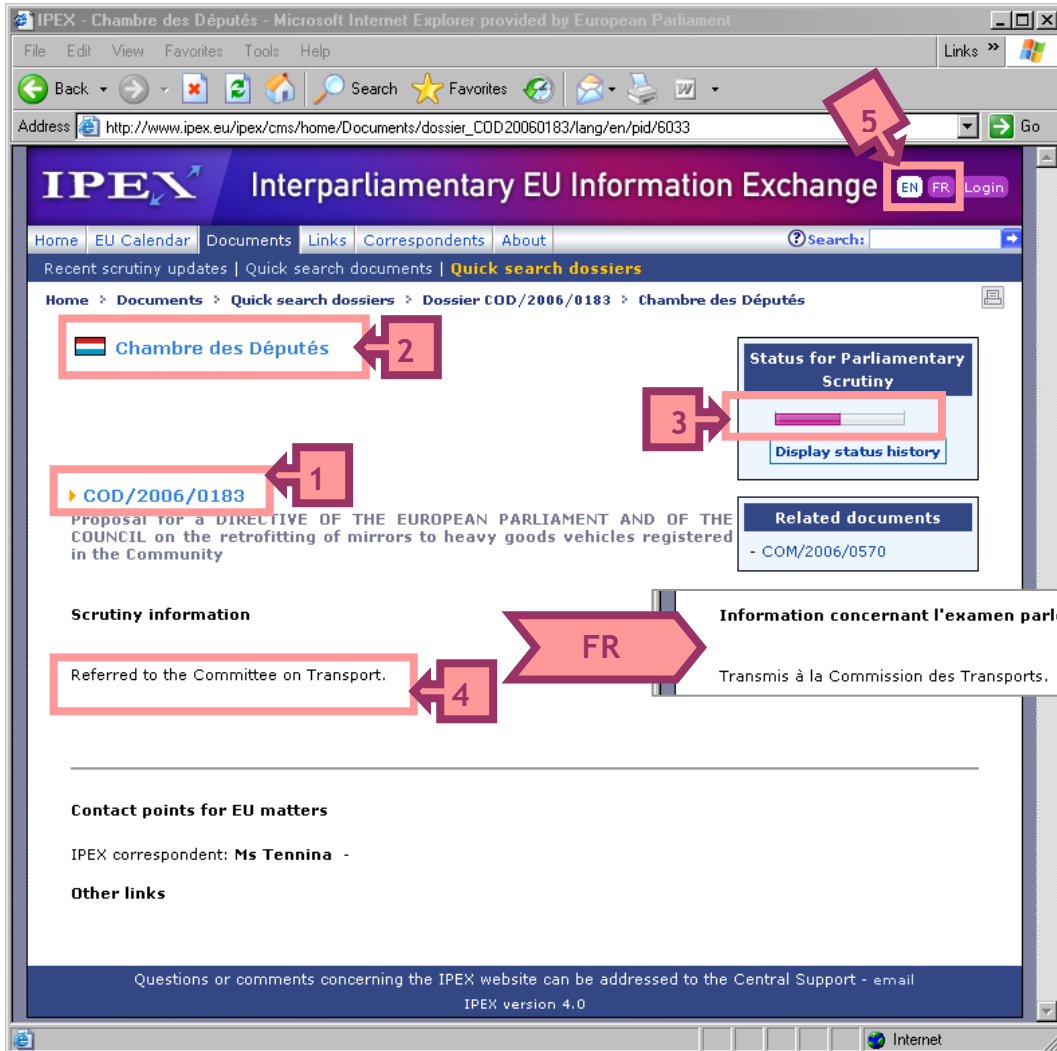


2.4.4 Related documents [Description EN/FR]

Dossier reference COD/2006/0183

Chamber: Luxembourg Chamber of Deputies

URL: http://www.ipex.eu/ipex/cms/home/Documents/dossier_COD20060183/pid/6033



```

<?xml version="1.0" encoding="UTF-8"?>
<scrutiny>
  <dossier>
    <reference>
      <code>COD</code>
      <year>2006</year>
      <number>0183</number>
    </reference>
    <chamber>luchb</chamber>
  </dossier>
  <scrutiny_status scrutiny_name="2_in_progress">
    <subsidiarityAspects>>false</subsidiarityAspects>
    <scrutiny_date>09/11/06</scrutiny_date>
  </scrutiny_status>
  <language>
    <langue>EN</langue>
    <document_links>
      <document_links_description>
        Referred to the Committee on Transport.
      </document_links_description>
    </document_links>
  </language>
  <language>
    <langue>FR</langue>
    <document_links>
      <document_links_description>
        Transmis à la Commission des Transports.
      </document_links_description>
    </document_links>
  </language>
</scrutiny>

```

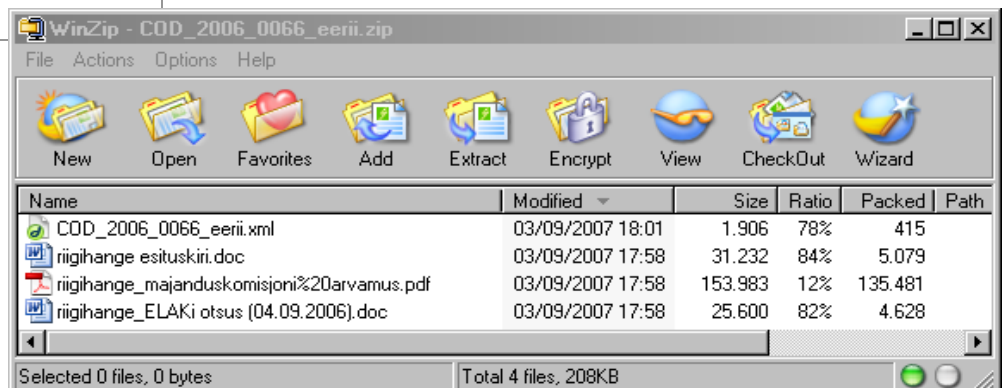
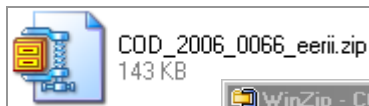
The diagram illustrates annotations on the XML code. Box 1 points to the <reference> element. Box 2 points to the <chamber>luchb</chamber> element. Box 3 points to the <scrutiny_status> element. Box 4 points to the <document_links> elements in both the EN and FR language sections. Box 5 points to the <langue>EN</langue> and <langue>FR</langue> elements.

2.4.5 Related documents [3 files]

Dossier reference COD/2006/0066

Chamber: Estonian Parliament

URL: http://www.ipex.eu/ipex/cms/home/Documents/dossier_COD20060066/pid/7693



```

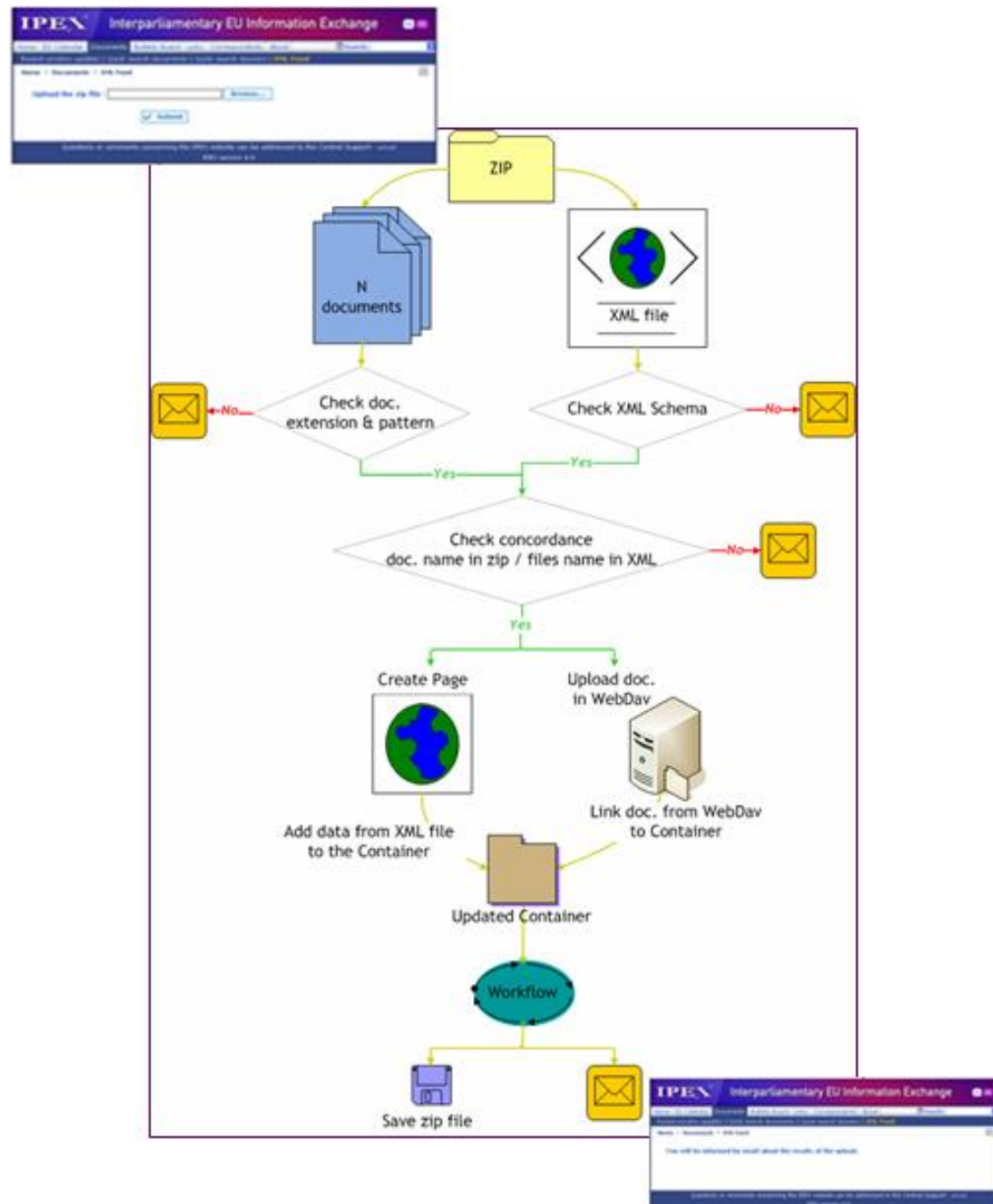
<?xml version="1.0" encoding="UTF-8"?>
<scrutiny>
  <dossier>
    <reference>
      <code>COD</code>
      <year>2006</year>
      <number>0066</number>
    </reference>
    <chamber>eerii</chamber>
  </dossier>
  <scrutiny_status scrutiny_name="2_in_progress">
    <subsidiarityAspects>>false</subsidiarityAspects>
    <scrutiny_date>19/12/06</scrutiny_date>
  </scrutiny_status>
  <language>
    <langue>EN</langue>
    <document_links>
      <document_links_description>Decision of the EU Affairs Committee</document_links_description>
      <document_links_files>
        <linksFile>riigihange_ELAKi otsus (04.09.2006).doc</linksFile>
      </document_links_files>
    </document_links>
    <document_links>
      <document_links_description>Opinion of the Economic Affairs Committee</document_links_description>
      <document_links_files>
        <linksFile>riigihange_majanduskomisjoni arvamus.pdf</linksFile>
      </document_links_files>
    </document_links>
    <document_links>
      <document_links_description>Government's position</document_links_description>
      <document_links_files>
        <linksFile>riigihange esituskiri.doc</linksFile>
      </document_links_files>
    </document_links>
  </language>
  <language>
    <langue>FR</langue>
    <document_links>
      <document_links_description>Decision of the EU Affairs Committee</document_links_description>
      <document_links_files>
        <linksFile>riigihange_ELAKi otsus (04.09.2006).doc</linksFile>
      </document_links_files>
    </document_links>
    <document_links>
      <document_links_description>Opinion of the Economic Affairs Committee</document_links_description>
      <document_links_files>
        <linksFile>riigihange_majanduskomisjoni arvamus.pdf</linksFile>
      </document_links_files>
    </document_links>
    <document_links>
      <document_links_description>Government's position</document_links_description>
      <document_links_files>
        <linksFile>riigihange esituskiri.doc</linksFile>
      </document_links_files>
    </document_links>
  </language>
</scrutiny>
  
```


3 Diagrams

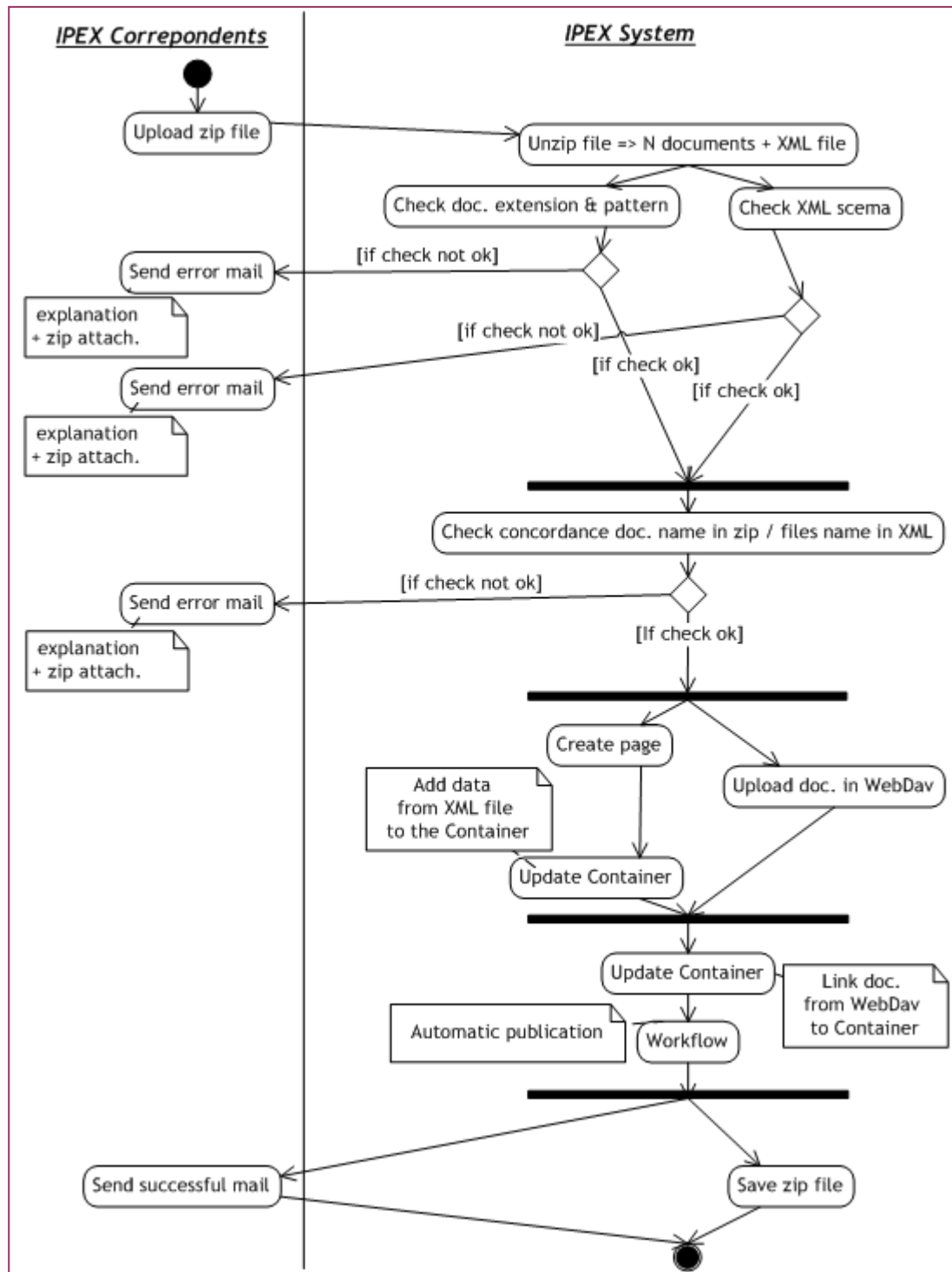
The following diagrams display the detailed process / activity for adding and updating an IPEX Dossier Detail via the XML Feed new functionality.

3.1 ADDITION

3.1.1 Process diagram

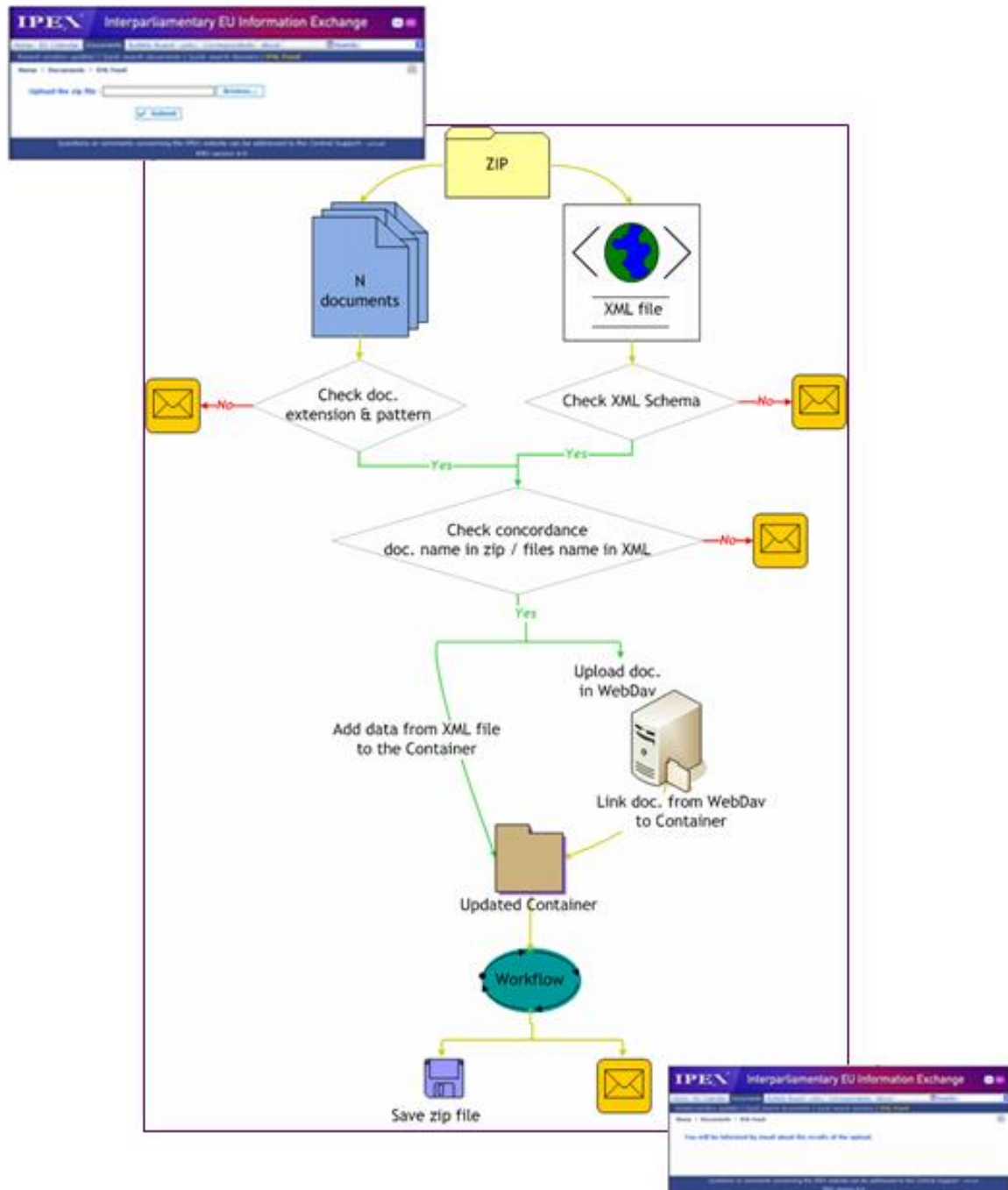


3.1.2 Activity diagram

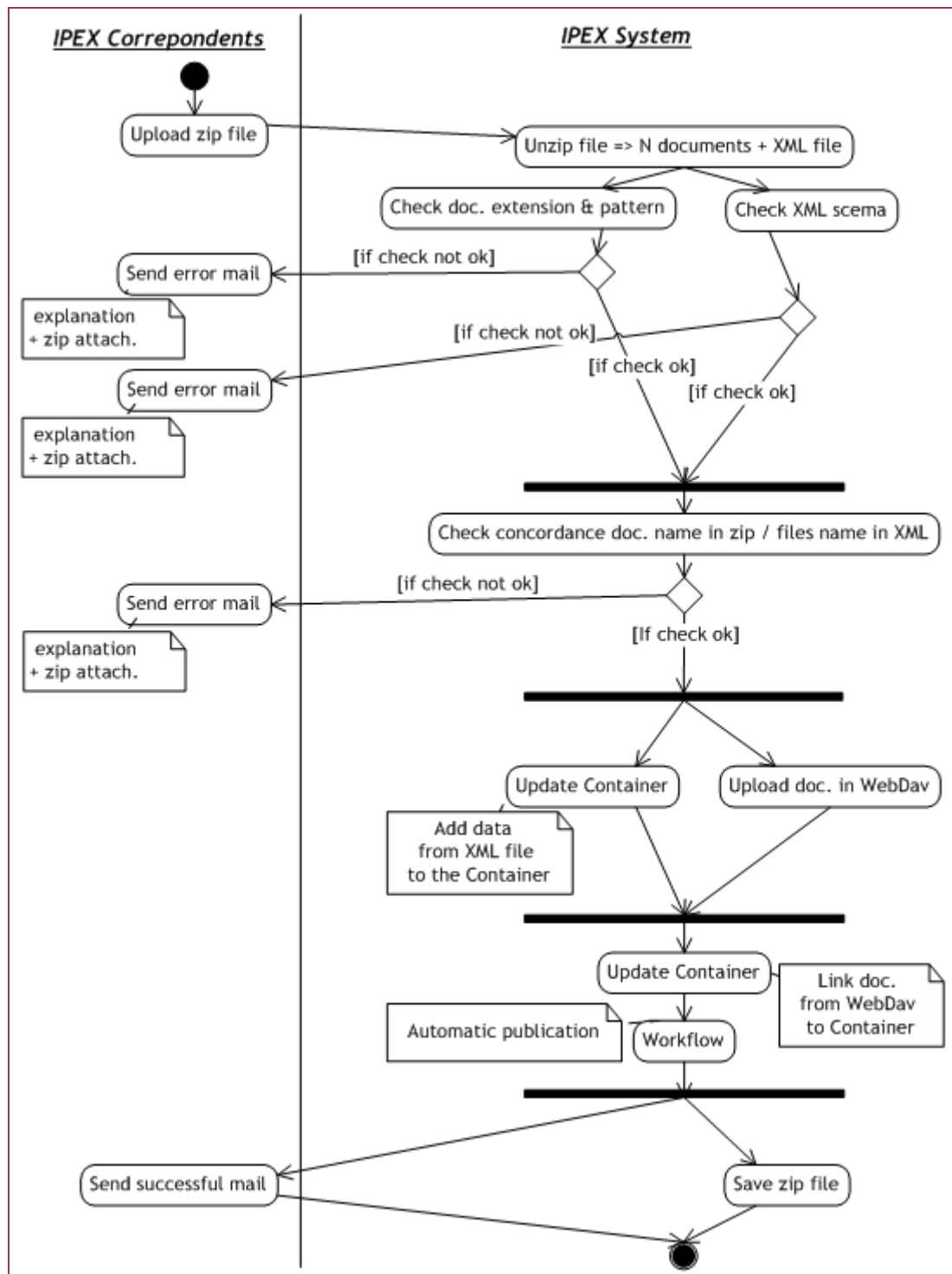


3.2 UPDATE

3.2.1 Process diagram



3.2.2 Activity diagram



3.3 SUPPRESSION

The suppression of information will be done manually by accessing the Scrutiny page in edition mode.

4 Management rules

▣ Rule n°1: Automatic publication (no workflow)

▣ Rule n°2: Update

❖ Rule n°2.1

The data concerning the bloc "Scrutiny Status" (paragraph 4.1.2) will overwrite the existing data; however, the data are stored in the Status history popup.

❖ Rule n°2.2

The data concerning the blocs "Related documents", "Contacts points for EU Matters" and "Other links" (paragraph 4.1.2) will be added following the existing data.

▣ Rule n°3: WebDav arborescence

For the sake of performance and readability, the files will be loaded in the WebDav in a specific folder:

ROOT\users\chamberCodecorresp\year\

where:

chamberCode = specific code of the chamber (Annex - paragraph 8)

year = Dossier year (part of its reference)

5 Questions

We propose you 2 options for the processing of the XML:

▣ 1st proposition

Publication of data without waiting

Inconvenient: risk of server overload with performances loss for the connected users.

▣ 2nd proposition:

Creation of a Web Service executing during the night

=> Processing of all the data loaded during the day

Inconvenient: request result visible for the user the morrow

6 Annex

The following table displays the list of the codes for the chambers, implemented during the creation of the correspondents' accounts

| <u>Country</u> | <u>Chamber</u> | <u>Chamber - EN</u> | <u>Code</u> |
|----------------|-----------------------------------|------------------------------------|-------------|
| Belgium | Sénat | Belgian Senate | besen |
| | Chambre des Représentants | Belgian Chamber of Representatives | bechb |
| Czech Republic | Poslanecká sněmovna | Czech Chamber of Deputies | czpos |
| | Senát | Czech Senate | czsen |
| Denmark | Folketinget | Danish Parliament | dkfol |
| Germany | Bundestag | German Bundestag | debta |
| | Bundesrat | German Bundesrat | debra |
| Estonia | Riigikogu | Estonian Parliament | eerii |
| Greece | Vouli Ton Ellinon | Hellenic Parliament | grvou |
| Spain | Congreso de los Diputados | Spanish Congress of Deputies | esdip |
| | Senado | Spanish Senate | essen |
| France | Assemblée Nationale | French National Assembly | frass |
| | Sénat | French Senate | frsen |
| Ireland | Seanad Eireann | Irish Houses of Oireachtas | iesea |
| Italy | Camera dei Deputati | Italian Chamber of Deputies | itcam |
| | Senato della Repubblica | Italian Senate | itsen |
| Cyprus | Vouli Antiprosopon | Cyprian House of Representatives | cyvou |
| Latvia | Saeima | Latvian Parliament | lvsae |
| Lithuania | Seimas | Lithuanian Parliament | ltsei |
| Luxembourg | Chambre des Députés | Luxembourg Chamber of Deputies | luchb |
| Hungary | Országgyűlés | Hungarian National Assembly | huors |
| Malta | Il-Kamra Tad-Deputati | Maltese House of Representatives | mtkam |
| Netherlands | Tweede Kamer | Dutch House of Representatives | nltwe |
| | Eerste Kamer | Dutch Senate | nleer |
| Austria | Nationalrat | Austrian National Council | atnat |
| | Bundesrat | Austrian Federal Council | atbun |
| Poland | Sejm | Polish Sejm | plsej |
| | Senat | Polish Senate | plsen |
| Portugal | Assembleia da República | Portuguese Assembly of Republic | ptass |
| Slovenia | Državni Svet Republike Slovenije | Slovenian National Council | sisve |
| | Državni Zbor Republike Slovenije | Slovenian National Assembly | sizbo |
| Slovakia | Národná Rada Slovenskej Republiky | Slovakian National Council | skrad |
| Finland | Eduskunta | Finnish Parliament | fiedu |
| Sweden | Riksdagen | Swedish Parliament | serik |
| United Kingdom | House of Commons | British House of Commons | ukcom |
| | House of Lords | British House of Lords | uklor |
| Bulgaria | Narodno Sobranie | Bulgarian National Assembly | bgnar |
| Romania | Camera Deputatilor | Romanian Chamber of Deputies | rocam |

European Parliament - DIT

IPEX Central Support

| | Senatul | Romanian Senate | rosen |
|---------------------------------------|------------------------------|---|-------|
| Croatia | Hrvatski Sabor | Croatian Parliament | hrhrv |
| Turkey | Türkiye Büyük Millet Meclisi | Turkish Grand National Assembly | trmil |
| Former Yugoslav Republic of Macedonia | Sobranie | Assembly of the Former Yugoslav Republic of Macedonia | mksob |